

Enabling a sustainable built environment through knowledge and collaboration

Providing training free at the point of use for your suppliers & your workforce across Australia to tackle their sustainability impacts and meet the needs of clients, government and stakeholders

2025: Charles Naud

Charles.naud@actionsustainability.com

A low-angle shot of a modern building with a grey facade and large windows. A dense, vibrant green vertical garden covers the central portion of the building's exterior, with several windows integrated into the foliage. The sky is a clear, pale blue.

Our vision is an industry where everyone will have the skills and knowledge to deliver a sustainable future.

Our mission is to enable a sustainable built environment through knowledge & collaboration.

OUR FOUNDING PARTNERS IN AUSTRALIA

Making learning free to the built environment supply chain & driving collaboration



5-YEAR VISION – THE SCHOOL IN 2030

We will be recognised as an award -winning collaborative supplier sustainable development programme for the built environment sector in Australia

**Annual
engagement
by 2030**

10,000

Active
learners

2,000

Companies

40,000

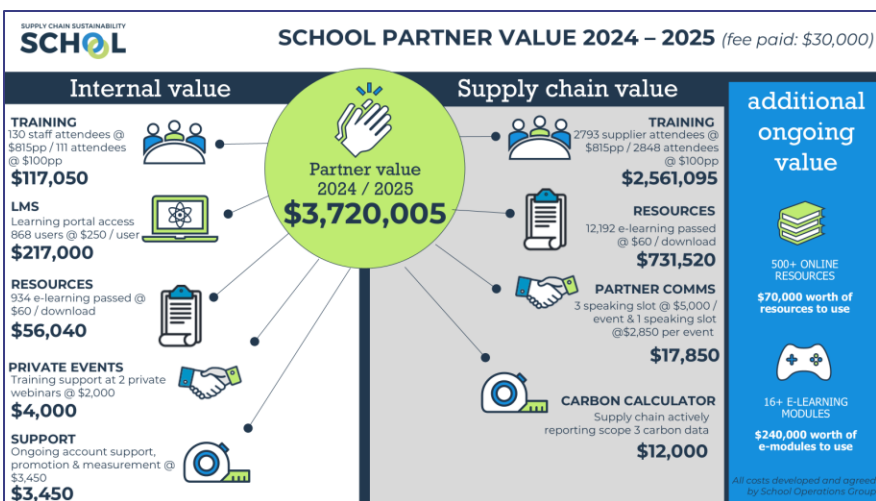
Resources
accessed

40

Partners

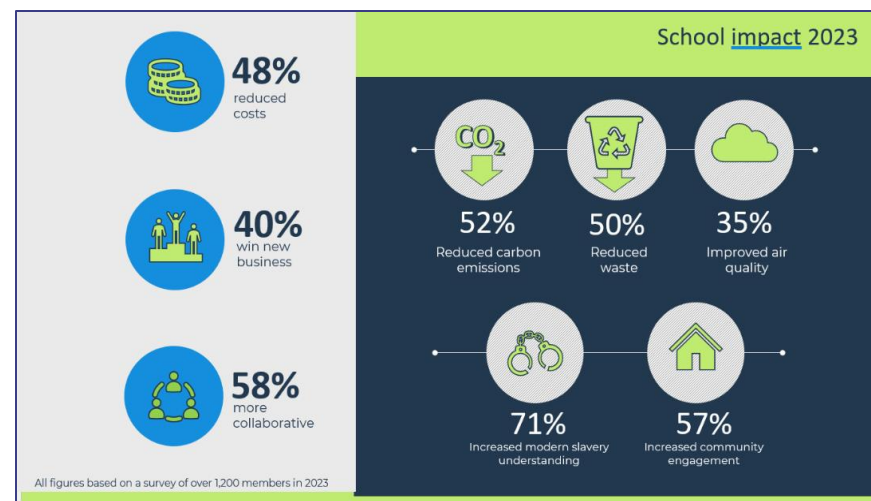
Demonstrate our impact to Partners

Annual ROI reports for each Partner



Demonstrate our impact to Industry

An annual member wide survey of impact



UNDERSTANDING YOUR NEEDS

Our understanding of your needs are:

1. To assess the **sustainability capability** across your organisation & supply chain
2. To deliver & track sustainability **training on projects**
3. To access best-in-class **sustainability learning** for your internal colleagues & supply chain based on priority issues such as Strategy, Energy & Carbon, Social Value, Fairness Inclusion & Respect, and Circular Economy
4. To deliver **online supplier development** programmes specifically for the built environment sector (infrastructure, construction, facilities management, utilities, etc.)
5. To visualise and allow downloadable data for **reporting to clients**, investors, government and 3rd party organisations
6. To provide **engaging virtual & in-classroom training** with expert trainers
7. To provide a **Learning management System** for your workforce and content for any future LMS you might buy

1

ASSESSING INDIVIDUAL TRAINING NEEDS AND COMPANY PRACTICE

Assess the sustainability maturity of your suppliers and the sustainability knowledge of individuals. At a company level it is what the company does and at an individual-level it is what the individual knows. Completing the assessment results in an Action Plan at company level and learning plan for individuals.

Individual and corporate assessments

Sustainability Assessment

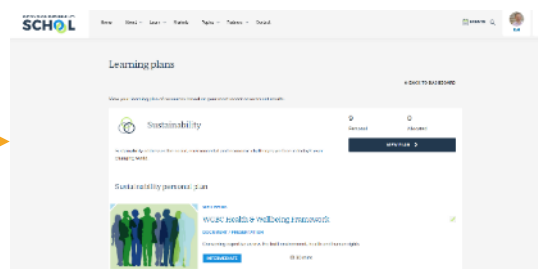
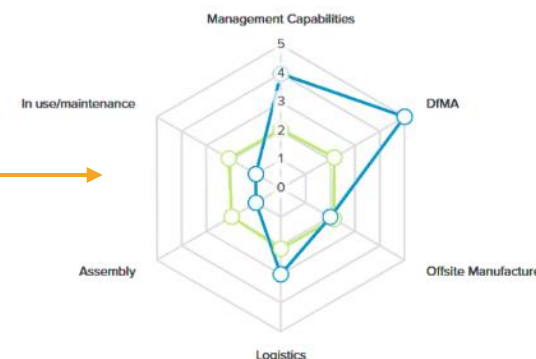
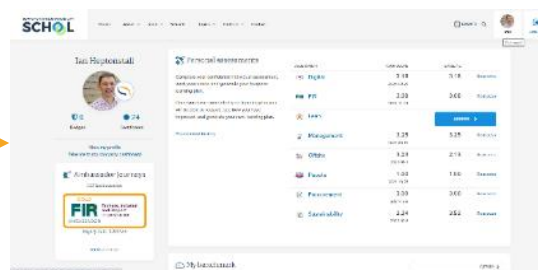
Please rate your knowledge on each of the statements using the options below. For more information, please click on the question mark to the right of each question.

Please note: If you find answer is already selected, this is the answer you gave in your previous assessment. If you find the answer is selected as 'Not applicable', this question does not apply to your issue category and should not be answered. Should you have any issues completing your assessment, please contact the School team.

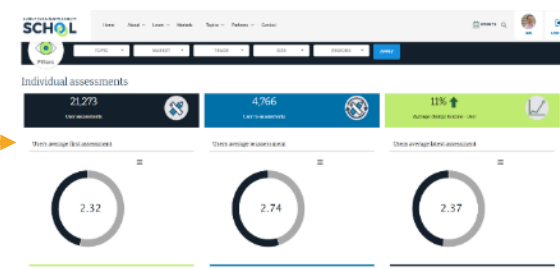
1 Sustainability Strategy

- ☐ I have no knowledge of this subject or have basic knowledge but do not apply it.
- ☐ I understand the three pillars of sustainable development and the need for a sustainability policy.
- ☐ I understand how to develop a sustainability strategy based on a structured risk/opportunity analysis and implement it through our business.
- ☒ I understand how to undertake a Materiality Review and understand how to minimise our environmental impacts and maximise the social value we deliver. I understand how to measure and verify our performance.
- ☐ I understand how to drive best practice in sustainability using a framework such as the UN Sustainable Development Goals.
- ☐ Not applicable

Individual and corporate learning dashboards



Corporate action plans



Corporate supplier dashboards

2

DELIVERING & TRACKING TRAINING ON SITES & PROJECTS

Assign suppliers to projects & monitor their engagement on sustainability through dedicated training programmes and learning pathways.

Climate Change Adaptation e-learning module
E-LEARNING MODULE
How to adapt to the changes in climate.
ADVANCED REQUIRED 60 mins

CIRCULAR ECONOMY (MATERIALS, WASTE)
Materials e-learning module
E-LEARNING MODULE
Mitigate environmental and social impacts and benefit from using ethical and environmentally-friendly construction materials.
ADVANCED REQUIRED 60 mins

CIRCULAR ECONOMY (MATERIALS, WASTE)
Waste e-learning module
E-LEARNING MODULE
This 1-hour e-Learning module will provide you with an overview of waste impacts in the construction sector. Various waste mitigation and cost-saving measures will be covered.
ADVANCED REQUIRED 60 mins

Individual activity

Activity available	User resource views	Accounts accessing resources by user
4,030	420,676	36,001
2,164	25,120	159,020
61,861	151,218	20,772,46
323	44,189	12,673

Most popular resources

Activity views	Resource views
Introduction to Sustainable Construction	1,418
Introduction to Climate Change and Carbon	1,271
Reducing Resource Usage through the	1,215
Sustainability Strategy - Sustainability Data	1,107
Introduction to Environmental Management	1,098
Understanding Sustainable Procurement	1,098
Introduction to Green Procurement	1,098
The Circular Economy	1,098
Science Based Targets - Sustainability Data	1,098
FIR Training Task - FIR Induction	1,098
Introduction to BIM/BIM	1,098
Carbon Footprinting & Measurement	1,098
Introduction to Green Building	1,098
Introduction to BIM/BIM	1,098
Modern Slavery - Sustainability Data	1,098



Redfern Station Upgrade New Southern Concourse

The Redfern Station Upgrade – New Southern Concourse (the Project) will involve the construction of a new pedestrian concourse between Little Eveleigh and Marian Streets, with lift and stair access to Platforms 1 to 10. It will improve access to the station and create new connections to key destinations in the area for all customers including those with a disability, limited mobility, parents/carers with prams and customers with luggage.

The project is being delivered as part of the Transport Access Program and is the first stage in renewing the Redfern North Eveleigh Precinct. Redfern Station is the sixth busiest station on the rail network, serving the community, businesses, education and health centres. The station upgrade will meet the needs of current and expected growth in the area.

The new concourse will:

- Improve pedestrian connections and flow in and around the station
- Reduce congestion
- Provide a direct link with lift access to Little Eveleigh and Marian Street from Platforms 1 to 10.

Subject to planning approval, construction is expected to commence in late 2020 and would take around 18 months to complete.

This project is being delivered by Novo Rail. Novo Rail is an alliance of Transport for NSW in partnership with Aurecon, Laing O'Rourke and John Holland, working as one team to deliver infrastructure projects across Sydney's rail network.

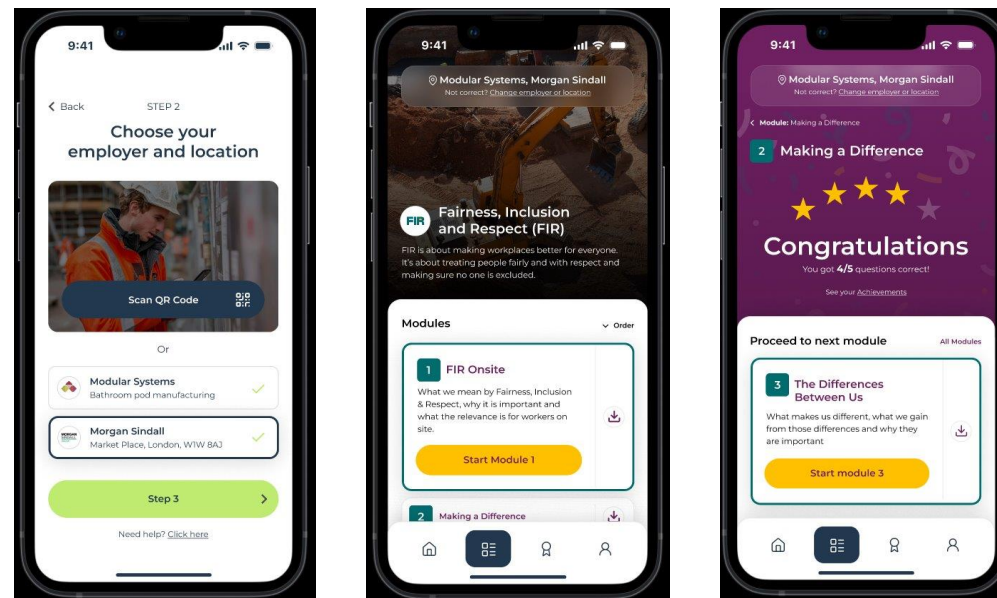
As part of the plan to achieve an 'Excellent' IS v1.2 Rating of 67 or above, this Project will be targeting Innovation Challenge – 6 Supply Chain Education.

ENROL

You are already enrolled on this learning path

The Supply Chain School mobile app

Our new site-based mobile application **is coming soon to Australia**. Designed for on-site workers, it provides simple, practical sustainability learning that can be completed on the go. The app makes it easy to track learning by site and by sub-contractor, helping teams build sustainability knowledge directly on your projects.



COMING SOON TO AUSTRALIA

BEST IN CLASS SUSTAINABILITY LEARNING

Search our catalogue of free learning resources

What are you looking for?

COMPETENCY ▾

TOPIC ▾

SUBTOPIC ▾

MARKET ▾

FORMAT ▾

RATING ▾

Web link
Document /
Presentation
Video
☒ E-learning
Module
Tool
Case Study
Event or
Workshop

OK

All resources

Showing 7 of 7 results

SUSTAINABILITY ✕

BUSINESS ETHICS ✕

ENERGY AND CARBON ✕

WALES ✕

E-LEARNING MODULE ✕



Carbon Reporting

How accurate carbon reporting can



Carbon Footprinting & Measurement



Reduce Carbon, Reduce Costs



Overheating in Homes

Explores the issue of overheating in



Introduction to CEEQUAL

What it means for supply chain companies



Green Infrastructure

E learning module introducing the concept

ACROSS 16 TOPICS

We have **16 sustainability topics** to upskill your supply chain and staff.

The content is guided by our **Content Development group** made up of our Partners who agree the priority themes and learning required and sign off on each of the new modules being produced.

Topics	#
Sustainability strategy	1
Sustainability reporting	2
Sustainable procurement	3
Energy & carbon	4
Climate adaptation	5
Environmental management	6
Nature & biodiversity	7
Water	8
Waste & circular economy	9
Air quality	10
Fairness, Inclusion & Respect	11
Modern slavery	12
Community engagement	13
Social Value	14
Wellbeing	15
First Nations Engagement	16

4

REACH, EDUCATE AND BUILD CAPABILITY

A portal with localised content providing **free training to 2,500** people learning by the end of year 1

Portal - development



Content - development

Delivery – First 12 months after launch



SUPPLIER DEVELOPMENT PROGRAMME

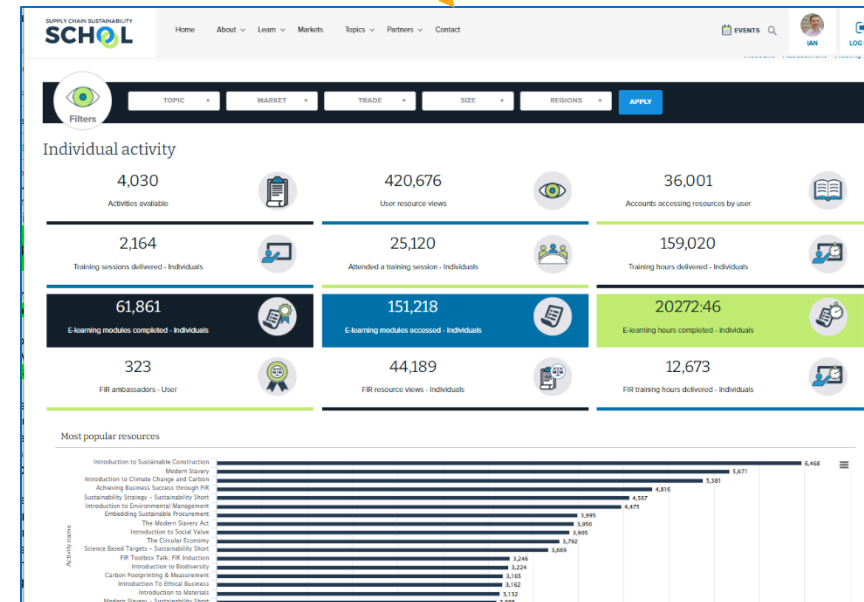
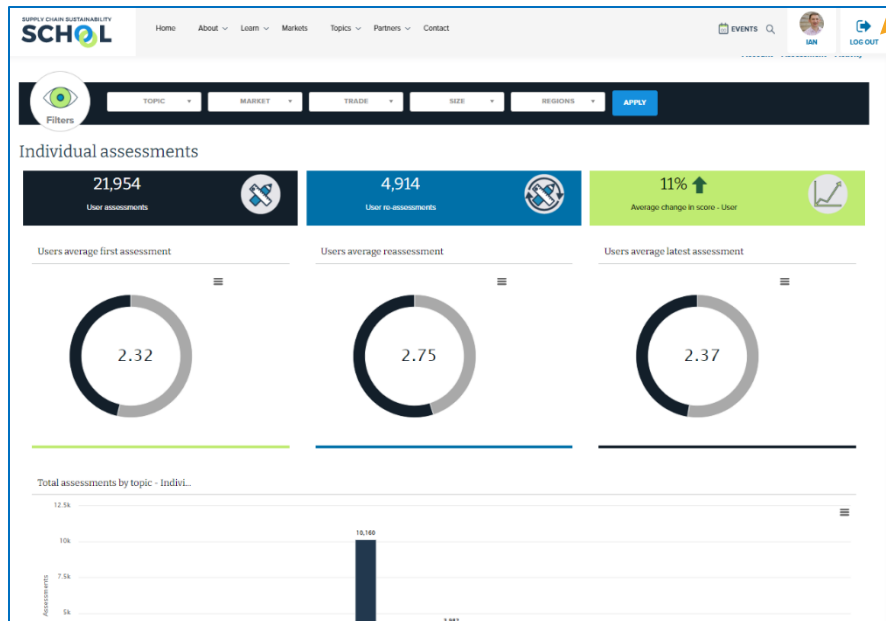
Our annual impact report shows that we improve the **sustainability and business performance** of companies & suppliers who learn with us.



5

REAL TIME REPORTING DASHBOARDS

1. Engagement
2. Assessment
3. Activity



ENGAGING VIRTUAL & FACE-TO-FACE TRAINING



36

Workshops



12

Lunch & learns



4

Conferences

95%

Of delegates rated
our virtual training
as good or excellent

96%

Of delegates rated
our trainers
as good or excellent

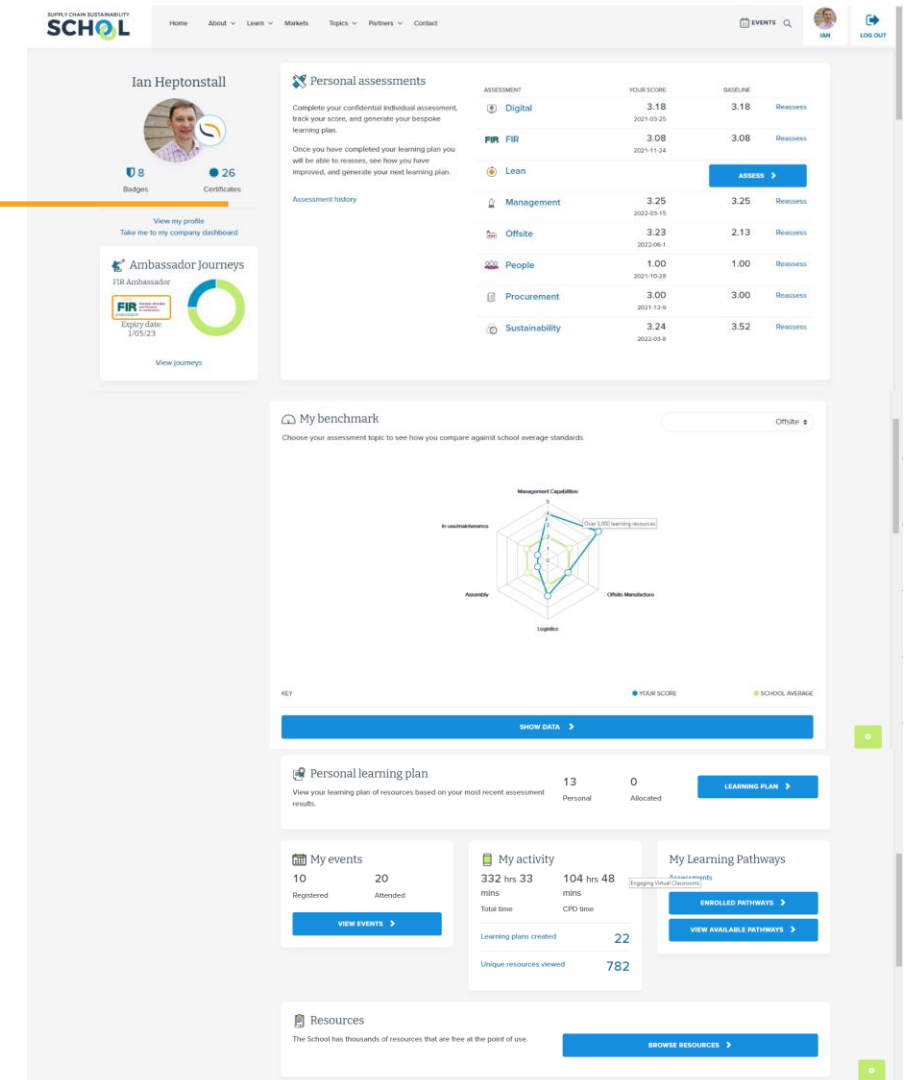
84%

Of delegates stated
that would
implement change
as a result of attending

A LEARNING MANAGEMENT SYSTEM

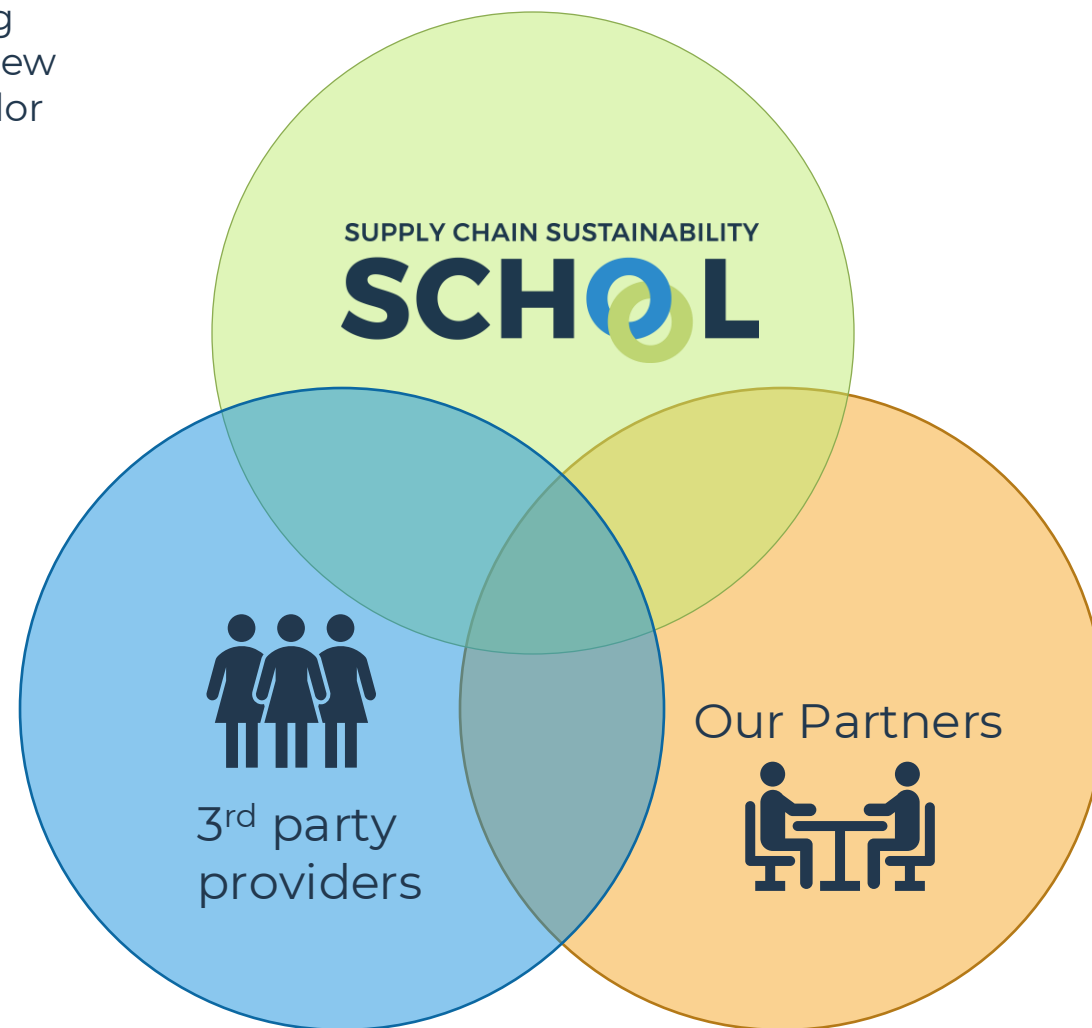
Each individual and supplier company get their own free learning dashboard that enables them to track all their learning and keep all their certificates in one place. Your suppliers can track all their team's learning from one dashboard.

We are a CPD accredited training centre.



ABILITY TO BUILD YOUR OWN LEARNING PATHWAYS

You can choose to use your own content, our existing content, or commission us or a 3rd party to develop new materials. These can all be brought together into tailor learning programmes for you and you supply chain



A DELIVERY PARTNER YOU CAN TRUST

Action Sustainability is a purpose driven business. We were formed in 2006 and launched the School in the UK in 2012. We trade profitably every year and invest heavily in our technology, team and content.

We have significant financial reserves, annual revenues of AU\$12m. We have a team of over 70 dedicated staff in the UK, Canada, Ireland, Europe, Dubai and Australia, they come to work each day to Inspire sustainable business.

CLICK [HERE](#) TO HEAR FROM OUR PARTNERS



**JOHN
HOLLAND**

"The School creates a unique environment where industry can come together to raise the bar on sustainability. It's an invaluable platform for upskilling our supply chain and embedding sustainability across our projects."

[Jim Green, GM Strategic Procurement](#)

ventia

"Improving sustainability outcomes across complex supply chains starts with education. The School equips our suppliers and people with the knowledge and awareness they need to contribute confidently, building a shared understanding and using a common language."

[Aaron Reid, Head of Social Sustainability](#)

SKANSKA

"Our ability to engage the supply chain and accelerate our journey to net zero has been transformed by our work with the Supply Chain Sustainability School."

[Katie Dowding, Chief Executive Officer](#)

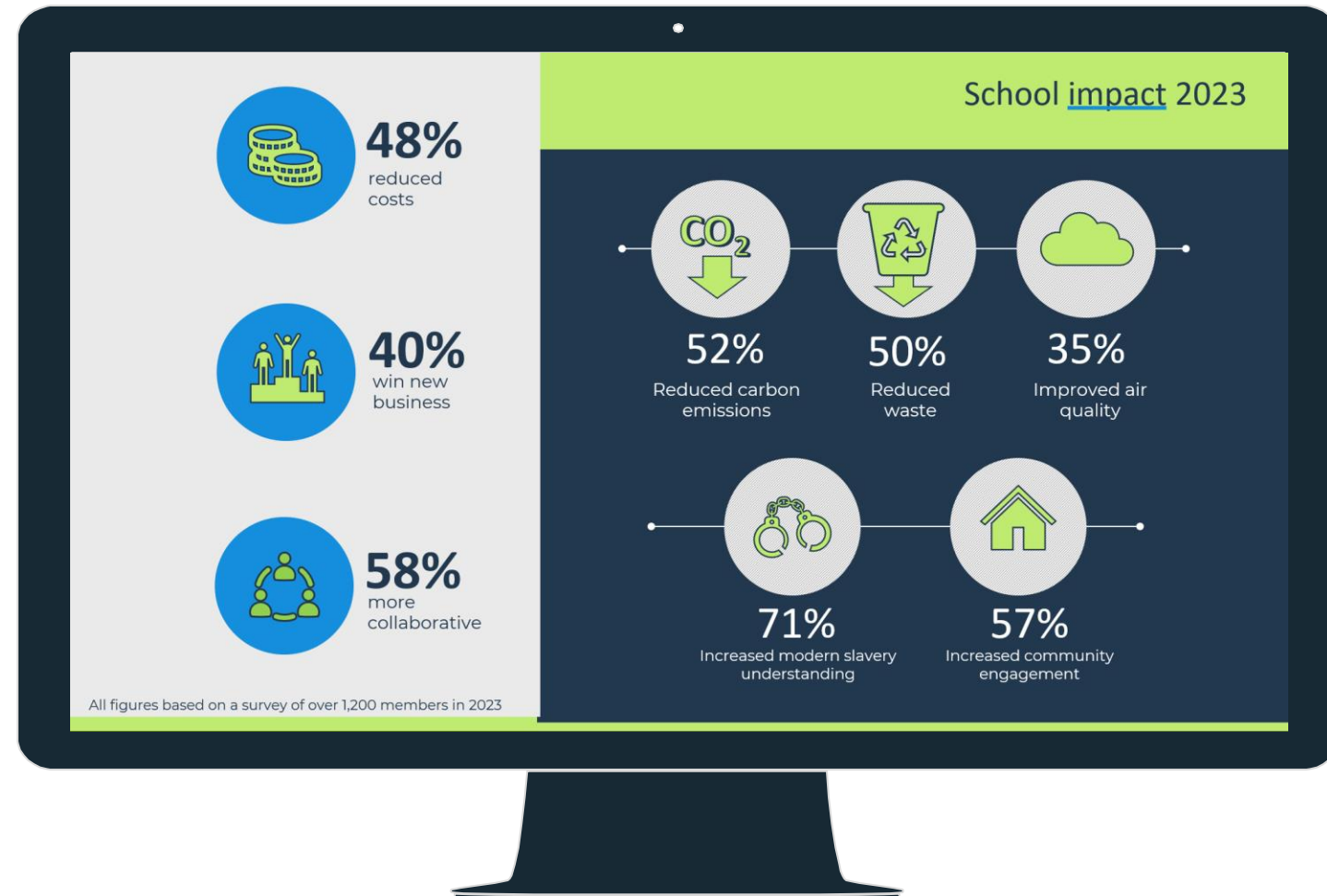
SIEMENS

"The School has been fundamental in enabling us to deliver our own action on climate change and wider sustainability issues"

[Dan Apps, Sustainability Manager](#)

MAKING AN IMPACT WITH YOUR SUPPLIERS

Our annual survey of over a 1,200 members revealed the following business benefits



PARTNERSHIP CONTRIBUTION

The **Partnership fees** allow Partners a range of specific benefits:

- A multi-award winning dedicated online sustainable supplier development programme
- Assess, track and manage the sustainability practice of up to 1,000 suppliers
- Benchmark data for supplier sustainability capabilities by trade categories
- Assess, track and manage the individual sustainability training needs of those who work in your company and your supply chain
- 5 virtual workshops or webinars delivered for your internal colleagues or your supply chain
- Access to over a \$1m of accredited sustainability training materials for use on your own learning management system (LMS) or the School's
- Collaboration groups to enable you to co-create solutions to sustainability issues
- Ability to curate learning content into bespoke branded learning programmes
- Host your own and 3rd party content for your supply chain

Our indicative annual **Partnership fee of \$30,000** (+taxes) for the Supply Chain School in Australia covers 12 months from the date of signing.

The Partnership allows an unlimited number of people to undertake an unlimited amount of training.

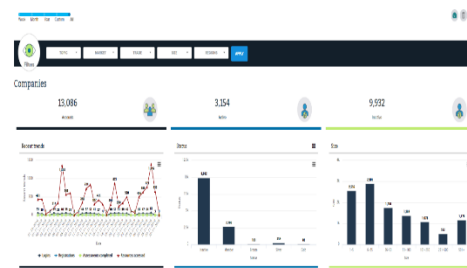
The key benefit for Partners of the School is a more knowledgeable workforce and a supply chain who have the skills to deliver and maintain the net zero carbon and sustainable buildings, homes and infrastructure that are increasingly being demanded by clients, investors, legislation and key stakeholders.

AS PARTNER YOU ALSO RECEIVE

Build supply chain



Supply chain tracking



Supply Chain Benchmarking



Tailored learning pathways



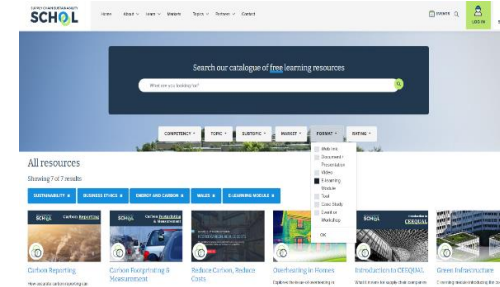
Five Workshops



Collaborate



Upload your own content



Use of learning on your LMS

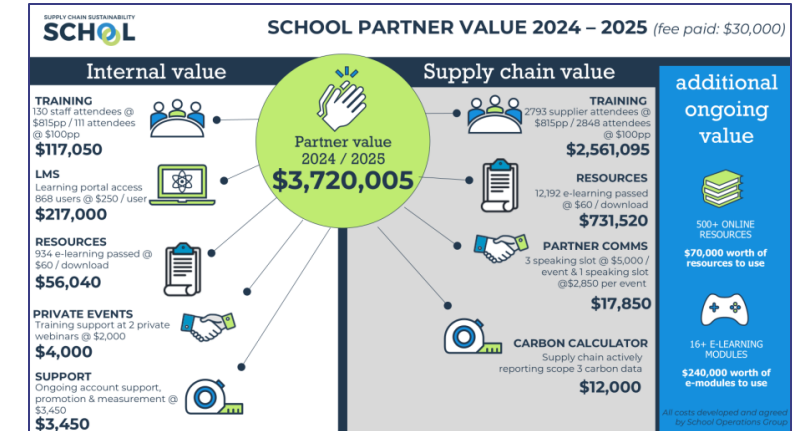


RETURN ON YOUR INVESTMENT

The School has set out a comprehensive set of activities and engagement ambitions.

As a part of this delivery each Partner will receive:

1. Five virtual ½ day workshops or webinars a year
2. Dedicated support person from the School team
3. Use any of the School's e-learning content on your own learning management systems
4. Unlimited internal use of the School's platform and learning materials.
5. Unlimited access for your supply chain to the portal and use of training materials.
6. Upload and track the learning and development of your key suppliers.
7. Annual return on investment data and infographic
8. Set up bespoke learning pathways for your team and your supply chain
9. Access to the Partner dashboards to view industry benchmarks, supply chain sustainability maturity, skills gaps and supplier progress
10. Share and access case studies in the School's resource library
11. Nominate representatives to participate in the School's Collaboration Groups
12. Nominate one candidate for election to the School Advisory Board



Thank you



charles.naud@actionsustainability.com



www.supplychainschool.au



0044 7884 664 188